



University Transportation Research Center

Region II News

Spring 2010

SPRING 2010

www.utrc2.org

IN THIS ISSUE

- [Director's Letter](#)
- [News & Notes](#)
- [Research Highlights](#)
- [Recent Events](#)
- [Upcoming Events](#)

UPCOMING EVENTS

- [ITS-NY Seventeenth Annual Meeting June 10th and 11th](#)
- [“High Speed Rail: Leveraging Federal Investment Locally” presented by the Rudin Center](#)
- [UTRC Co-sponsors “Airports: 21st-Century Makeovers For The NY Metro Region”](#)
- [NDE/NDT for Highway Bridges: Structural Materials Technology](#)

CONTACT US

www.utrc2.org
utrc@utrc2.org

DIRECTOR'S LETTER

Spring 2010 has been a busy and successful semester at the University Transportation Research Center. From our continued effort to support and fund transportation



education, to a number of exciting presentations by faculty and visiting scholars, to performance of research projects and community interactions, we have been at the forefront of many activities happening in our region.

The Center extends a warm welcome to Matthew Daus, former

and longer serving commissioner of the NYC Taxi and Limousine Commission, who joined UTRC last April. Matt brings his extensive knowledge and expertise with the taxi, limousine and paratransit industry. At UTRC, he will be working to create closer connections with these groups and to conduct research to further integrate the inclusion of taxis and other for-hire vehicles into surface transportation planning, a mode of transport sometimes ignored.

We just hosted a major symposium entitled “Sustainable Transit: Developing an Action Agenda” The symposium brought together more than 200 participants to debate and work towards the common goal of achieving regional sustainability. The presentations were enlightening and the short discussions were productive. We have also started to offer live webcast of our events. This program has been very successful. As we are developing our technology transfer and outreach programs, we will work to expand this option for our major events.

As always, we enjoy sharing our successes and updates with you in our newsletter. Your comments and suggestions about our work are welcome.

Camille Kamga

NEWS AND NOTES

UTRC Symposium Attracts Who's Who In Transit

On May 7th, UTRC presented the symposium “Sustainable Transit: Developing an Action Agenda” to nearly 200 participants. International and national experts, operators, practitioners, planners, decision makers, public officials and academics came together to work towards the common goal of achieving regional sustainability. And, more specifically, how transit - already the foundation of integrated plans can further support goals. Participants traveled to the City College campus to generate discussions, exchange and debate ideas and attempt to answer some of the most difficult questions facing the region. For much more information and to view portions of or the entire webcast please follow this link, <http://www.utrc2.org/events/events.php?viewid=264>



Professor José Holguín-Veras Travels to Haiti



Professor of Civil and Environmental Engineering at Rensselaer Polytechnic Institute, Jose Holguin-Veras, traveled several times earlier this year to Haiti and to the Dominican Republic. Dr. Holguin-Veras sought to continue his research and to learn from relief efforts from a logistics point of view, and also to advise governments and agencies involved. Upon his return, he presented his findings and compared them with disaster relief efforts following Hurricane Katrina in Louisiana to the UTRC audience. On February 19th Jose presented, “What Previous Disasters Teach: The (Really) Hard Lessons of Katrina and Haiti For Humanitarian Logistics”.

To view Jose’s presentation through the archived webcast courtesy of our co-

sponsor NYMTC, follow <https://www.nysdot.gov/portal/page/portal/main/webcast>.

Matthew Daus, former NYC Taxi and Limousine Commissioner, Joins UTRC



Matthew W. Daus has joined UTRC and CUNY as a Distinguished Lecturer and plans to begin teaching at CCNY in the Fall. Matt brings his extensive knowledge and expertise with the taxi, limousine and paratransit industry. At UTRC, he will be working to create closer connections with these groups and to conduct research to further integrate the inclusion of taxis and other for-hire vehicles into surface transportation planning, a mode of transport sometimes ignored. In the last few months, Matt has presented at the annual meetings of the Air Ground Transportation Association and the Taxicab, Limousine and Paratransit Association. He will also remain active as the President of the International Association of Transportation Regulators (IATR), a group of government professionals and regulatory agencies from around the world who share best practices and promote positive change in the for-hire ground transportation industry.

Prior to joining UTRC, Matthew Daus was appointed by former Mayor Rudolph W. Giuliani and unanimously confirmed by the New York City Council on August 22, 2001 as the tenth Commissioner/Chairman of the New York City Taxi and Limousine Commission (TLC).

For more information, please see <http://utrc2.org/directory/people.php?viewid=254>

Jonathan Peters Appointed to Professor of Finance at CSI



Jonathan R. Peters, a long time PI and Research Fellow with UTRC, has recently been promoted to Full Professor of Finance at the College of Staten Island. He currently conducts research in the areas of regional planning, road and mass transit financing, corporate and public sector performance metrics, capital costs and performance management. In addition, he serves on the Economics of Pricing Subcommittee of TRB and is a Board Member of CIUS. He is also currently serving on two TRB panels, one NCHRP project and one NCFRP project. His work on public-private partnerships was published in 2006 by the New York State Department of Transportation. He has previously published in The Journal of Applied Finance, Transportation Quarterly and most recently in Public Works Management & Policy. Previously, Peters has worked in the Finance Division of AT&T Corporation where he was a subject

matter expert on immigration and international finance. For more information on Prof. Peters research projects with UTRC see <http://utrc2.org/directory/people.php?viewid=88>.

New Public Participation Portal Developed at Hunter College

The Choosing Visualization for Transportation (CVT) Knowledge Sharing Web Portal is now operational. This new web portal is designed to be a one-stop shop for effectively applying visualization tools and techniques in public involvement. The website is also meant to communicate credible information about how visualization methods and techniques can be used to facilitate and support public participation in transportation planning activities. [Hunter College](#) and [Parsons Brinckerhoff](#) developed this site collaboratively with funding from the [FTA's Public Transportation Participation Pilot Program \(FY 2008/Round III\)](#). The core team in creating and populating this

website consists of Dr. Laxmi Ramasubramanian, Robin Christians, Parsons Brinkerhoff, and Deborah Stattel Hunter Research Assistant. Advice and consultation was given by an Advisory Committee made up of academics, professionals and tool developers. Dr. Ramasubramanian and the team has built a robust catalog of information about visualization tools, methods and techniques, and an interactive guide to assist in selecting an appropriate strategy to effectively integrate data and information visualization into public outreach and engagement activities.

Review this helpful tool at <http://choosingviz.org/>

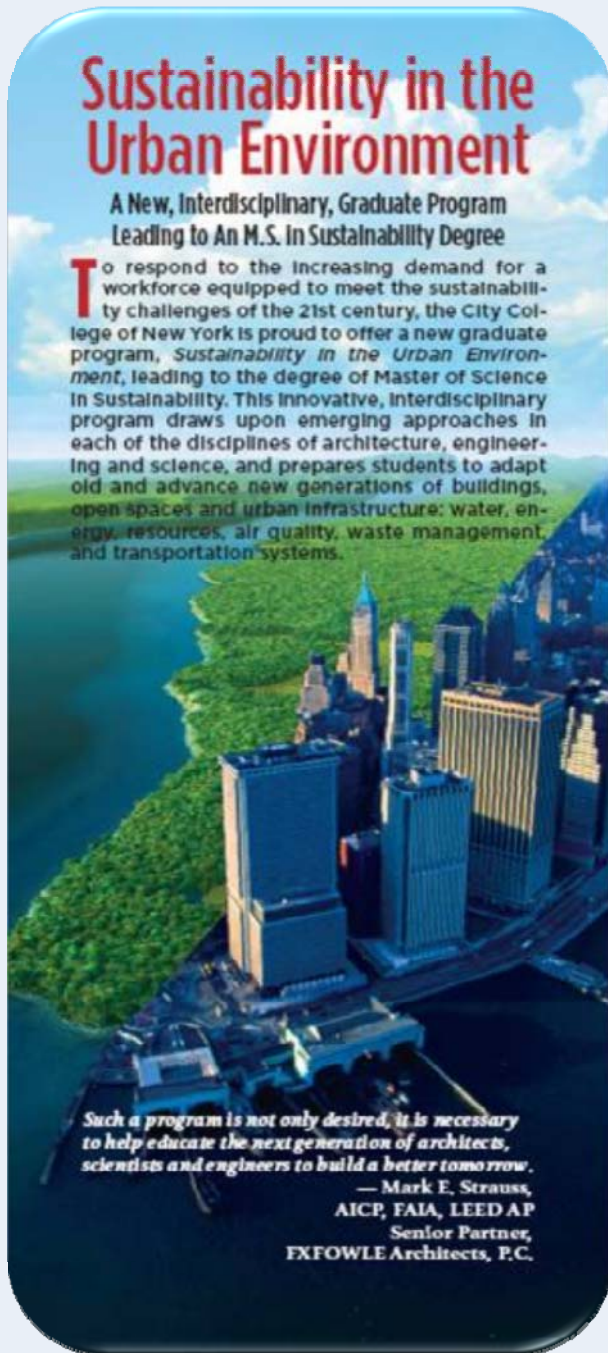
CCNY Offers New Masters Program: Sustainability In The Urban Environment

The City College of New York now offers a new, interdisciplinary graduate program, “Sustainability in the Urban Environment,” that incorporates emerging approaches from the disciplines of architecture, engineering and science. This program awards a Master of Science degree in Sustainability to its graduates.

The 30-credit program is designed to respond to the increasing demand for a workforce equipped to meet the sustainability challenges of the 21st century. Students in the program will be prepared to adapt old and advance new generations of buildings, urban infrastructure and open spaces using approaches that take into account rapid urbanization, environmental degradation, peak oil, and climate change.

Graduates will ultimately develop leadership and teamwork skills that will give them an advantage in diverse professional settings where interaction and collaboration among teams of scientists, engineers, architects and others are commonplace.

For admissions information and other questions call (212)650-6977 or write to graduateadmissions@ccny.cuny.edu. An online application is available at: <http://www1.ccny.cuny.edu/prospective/admissions/grad/index.cfm>



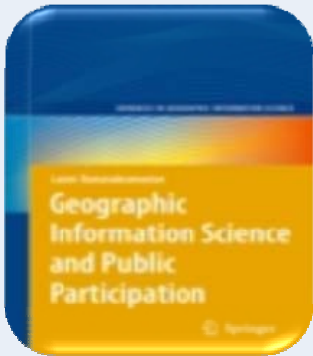
Professor Wakeman Appointed to NCFRP Oversight Committee

Dr. Thomas H. Wakeman III, *Deputy Director, Center for Maritime Systems at the Stevens Institute of Technology* and Research Professor of Civil, Environmental and Ocean Engineering has recently been appointed to the National Cooperative Freight Research Program (NCFRP) Oversight Committee of the TRB. The National Cooperative Freight Research Program (NCFRP) will carry out applied research on problems facing the freight industry that are not being adequately addressed by existing research programs. SAFETEA-LU, in authorizing the NCFRP, called for development of a national research agenda addressing freight transportation and for implementation of a multi-year strategic plan to achieve it. The NCFRP Oversight Committee formulates the research program by identifying the highest priority projects and defining funding levels and expected products as well as makes the project selections that are then assigned to the expert panels. Prof. Wakeman joins the multi-disciplined Committee consisting of public and private sector freight stakeholders, including shippers, carriers, US DOT, other federal agencies, state transportation departments, local governments, nonprofit entities, and academia.



To learn more about Prof. Wakeman's work please visit <http://utrc2.org/directory/people.php?viewid=223>.

Professor Ramasubramanian Publishes New Book



Dr. Laxmi Ramasubramanian, Associate Professor in the Department of Urban Affairs and Planning at Hunter College and Doctoral Faculty in the Earth and Environmental Sciences Program, has recently released her new book entitled Geographic Information Science and Public Participation published by Springer. Her work is described as a book that argues that many positive planning and policy outcomes that can result when GIS experts and community organizers work together to address problems affecting our neighborhoods and cities. Her work is described as a book that argues that many positive planning and policy outcomes that can result when GIS experts and community organizers work together to address problems affecting our neighborhoods and cities.

Professor Ramasubramanian has worked for twenty years in the grassroots, designing and implementing a wide range of community-oriented GIS activities. The book is further described as both an account of personal experiences, as well as an academic reflection of professional practice. For the full review follow <http://www.amazon.com/Geographic-Information-Science-Participation-Advances/dp/3540754008>

Kwan Hui of Rutgers' Bloustein School Selected for the Eno Leadership Development Conference

Kwan Hui, a graduate student pursuing a degree in City and Regional Planning at Rutgers University's E.J. Bloustein School of Planning and Public Policy has been selected to attend this year's Leadership Development Conference organized by the Eno Transportation Foundation in Washington, DC. The 18th Annual Conference will be attended by 20 students competitively selected from around the nation. Students are offered the opportunity to learn "first hand" how transportation policies are developed. Students spend the week meeting with federal officials, businesses and non profits.

RESEARCH HIGHLIGHTS

Mind the Map! The Impact of Transit Maps on Travel Decisions in Public Transit

Dr. Zhan Guo, Assistant Professor of Urban Planning and Transportation Policy at New York University's Wagner School of Public Service, has recently completed a project that investigates the impact of the famous London tube map on passengers' path choice in the London Underground (LUL). Using data collected by LUL from 1998 to 2005, he developed a path choice model and comparing the influence between the distorted tube map (map distance) and reality (travel time) on passengers' path choice behavior. Analysis results show that passengers often trusted the tube map more than their own travel experience on deciding the "best" travel path. This is true even for the most experienced passengers to the system. The codification of transfer connections on a transit map, either as a simple dot or as an extended link, could affect passengers' transfer decisions. The finding has important implications to transit operation and planning, such as trip assignments, overcrowding mitigation, and the deployment of Advanced Transit Information System (ATIS). A paper based on the work is currently under review. For more information, please contact Professor Guo at zg11@nyu.edu

Drs. Ozbay, Ozmen-Erekin, and Chen Complete NYMTC Data Project

The project funded by NYMTC and UTRC and titled "Improvements on NYMTC Data Products" was completed and the final report was published on Nov 11, 2009. The Principal investigator of the project was Dr. Kaan Ozbay (Rutgers University), the Co-Principal Investigators were Dr. Dilruba Ozmen-Ertekin (Hofstra University) and Dr. Cynthia Chen (University of Washington).

The main goal of the project was to perform a thorough review and examination of NYMTC data products from data quality point of view in order to ensure that these documents are current, professional looking, consistent, and *"contain the information that can be used easily by the users and serve their needs properly"*. Specifically, the research agenda focused on: 1) Identification of specific issues and problems about the existing data products, website and the current data maintenance practices at NYMTC, 2) Suggestion of appropriate solutions, both data and process oriented, for any issues identified, while taking into consideration the latest technological tools, results of the NYMTC's stakeholder survey, and best practices and NYMTC's current data maintenance practices.

The figure below is an example of a data oriented solution suggested in the report. It summarizes the suggested navigation path for data access and also shows how the 'NYMTC Home Page', pages for the individual data products, and 'Data & Model' page should be linked to each other. Details on how each of these three elements are recommended to be laid out and function as individual web pages are given in the report. The figure below also includes snapshots of suggested new looks for the Data & Model page, as well as an improved data product page.

NYMTC Logo

DATA & MODEL

A map of NYMTC Counties

Introductory text similar to current one

What's New

Most Requested

User Support

- >Get More Data via FTP
- >Request a Hardcopy
- >Join the Forum
- >FAQ

Browse Files

Alphabetically

- >Best Practices Model
- >Census
- >Conformity
- >County Profiles
- >Freight Data
- >GIS
- >High Speed Travel
- >INFO Wheel
- >Major Investment Studies
- >Regional
- >Regional Demographics
- >Regional Transp. Statistics
- >Surveys
- >Sustainable Development Studies
- >TSP: Future as N.Y. Metro Area
- >Transportation Safety
- >Traffic Toll Volumes
- >Vehicle Class. & Occupancy

By Topic

- >Transportation Stats
- >Demographics

By Source

- >NYMTC
- >US Census Bureau
- >MTA

By Type

- >Brochures
- >Full Reports

Search Files

Enter search string: ...

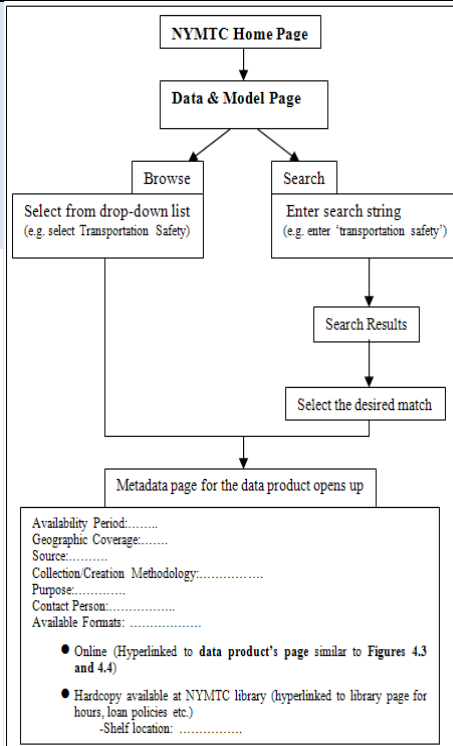
☐ Look for graphs charts maps only

Select Topic: ...

Select Year: ...

Sort by: ...

Submit



A representative image

REGIONAL TRANSPORTATION STATISTICS

Brief Introduction similar to current text

Metadata

Glossary

User Support

- >Get More Data via FTP
- >Request a Hardcopy
- >Join the Forum
- >FAQ

View and Download Full PDF

Or

Create custom tables and charts graphs:

Select State(s): ...

Select County(s): ...

Select Mode(s): ...

Select Variable(s): ...

Select Year(s): ...

☐ Check here to create associated graphs/charts

Check the basic descriptive statistics you wish to create:

☐ Sum ☐ Avg. ☐ Std. Dev.

View Customized Data in HTML

Export as XLS, DBF etc.

Suggested Look for a Data Product Page (Regional Transportation Statistics Report in this case) at NYMTC Website

Suggested Data & Model Page on the NYMTC Website

Suggested Navigation Path for Data Access Using the Improved NYMTC Website

Research In Action: Successful CSI Shuttle Bus Attracts Over 300,000 Riders



Over the last two years, a team at the College of Staten Island led by Professor of Finance, Jonathan Peters, has researched, developed, and implemented the CSI Shuttle Bus. Working together and utilizing modeling and GIS mapping capabilities of the CUNY High Performance Computer Center run by Dr. Michael Kress, the route was designed after an extensive survey was conducted and analyzed. The system, currently operated by the College, proved so successful in providing a quick, safe, and efficient option and connection to other transit for students, faculty and staff that had not exist previously, that ridership increased by 38% to 325,000 in just one year. The team also successfully secured funding for the service through the Job Access and Reverse Commute Fund (JARC) by displaying the need for this non-traditional destination route that provides needed linkages to

population and employment clusters and to more traditional transit operated by the NYC Transit Authority. An expansion of the route is currently under review. Dr. Peters presented the success story at the recent CUNY IT Conference.

Pedestrian Studies Underway at Rutgers University's Alan M. Vorhees Transportation Center

Research has begun on a UTRC faculty-initiated research project, awarded to Dr. Robert Noland. This project is analyzing data on pedestrian behaviour collected as part of the NJ Pedestrian/Bicycle Resource Center (see below) during Fall 2009. This dataset includes a representative sample of New Jersey residents and an oversample of residents of Jersey City; the latter was collected to capture walking behavior in a densely populated region of the state. The team's initial approach is to analyze some of the potential factors associated with the propensity to walk and to examine area-specific barriers to walking. The survey data has been geo-coded based on location information collected during the survey. Multi-variate statistical models that will examine these issues are being developed. This work will be integrated with other on-going research on pedestrian safety.

The New Jersey Bicycle and Pedestrian Resource Center is a partnership between NJDOT and the Vorhees Transportation Center, created to assist public officials, transportation and health professionals, and the public in creating a safer and more accessible walking and bicycling environment through primary research, education and dissemination of information about best practices in policy and design. The Center is supported by the NJ DOT through funds provided by the Federal Highway Administration. The legislative subcommittee of the Center has been successful in influencing legislative changes including the recent passing of a pedestrian safety bill in NJ which clarifies and consolidates the mutual duties of motorists to pedestrians and vice versa (<http://tinyurl.com/yhsp56y>). A key element of the legislation included changing NJ from a "yield to pedestrian" state to a "stop and stay stopped" state.

To find out more about work the Resource Center is involved, including the "Pedestrian Safety Enforcement" training program please see <http://www.njbikeped.org/index.php> and for much more information about the Vorhees Center and their work including with the NJ Motor Vehicle Commission and on other topics such as factors influencing transit shuttles, low-cost intercity bus travel, safe school routes and other initiatives on bicycling and walking , please see <http://policy.rutgers.edu/vtc/>

RECENT EVENTS

UTRC Spring Visiting Scholar Seminars

"Transport, Land Use, and Value"



On April 30th, Dr. David Levinson presented to the UTRC audience. Dr Levinson proposed that given the fact that transportation creates land value, and recognizing the problem of underfunding transport infrastructure, new funding sources can be used to increase transport investment, create additional land value, and improve social welfare. Dr. Levinson's presentation considered the co-evolutionary process between the development of land and transport networks. Using data from the rail and Underground in London and the streetcar system in the Twin Cities, the empirical relationship was established statistically under several different contexts, and hypotheses about the positive feedback nature of the interaction were tested.

Dr. David Levinson is an Associate Professor in the Department of Civil Engineering at the University of Minnesota and Director of the Networks, Economics, and Urban Systems (NEXUS) research group. He currently holds the Richard P. Braun/CTS Chair in Transportation.

For more information and archived webcast: <http://www.utrc2.org/events/events.php?viewid=262>

“Meeting the Nation’s Transportation Challenge: How to Finance the Transportation Program”



This seminar was delivered by Visiting Scholar C. Michael Walton, Professor, Cockrell School of Engineering, University of Texas at Austin, on May 21st. Dr. Walton’s seminar focused on the fact that the US is facing a national transportation dilemma in system performance and funding which will lead to dramatic changes in government policy. The next national transportation authorization is considered the most critical since 1956, the year the interstate highway system and the trust fund were founded. This bill will chart the path for transportation in the 21st century. What are the options that may be the pillars for the authorization? Is there a new transportation vision for the nation? Where are we going and how do we get there?

Dr. C. Michael Walton is Professor of Civil Engineering and holds the Ernest H. Cockrell Centennial Chair in Engineering

at The University of Texas at Austin. Dr. Walton's research focuses on intelligent transportation systems and intermodal freight logistics in addition to transportation systems engineering, planning, operations and policy analysis.

For more information or to view the archived webcast please follow this link:

<http://www.utrc2.org/events/events.php?viewid=266>

“Efficient and Sustainable Urban Freight and Logistics Strategies. Can We Achieve and Afford a Low Carbon Urban Freight System?”



Dr. Michael Browne, Professor of Logistics at University of Westminster, will offer his expertise and experiences with freight logistics on June 2nd at the SUNY Global Center at 116 East 55th Street between Park and Lexington. Professor Browne will discuss recent developments in European urban freight focusing on policy and business initiatives. This will include a review of urban low emissions zones across Europe, urban freight consolidation centres, clean vehicles and moving from trials to implementation, public-private partnerships in urban freight and city and local authority planning initiatives that impact freight.

For more information or to view the archived webcast please follow this link:

<http://www.utrc2.org/events/events.php?viewid=267>

UTRC Co-Sponsors LAESA First Lego Qualifier at CCNY



Earlier in the year, UTRC was one of the co-sponsors which supported the Latin American Engineering Student Association at City College (LAESA) as they organized and offered “Transforming Transportation: First Lego League Manhattan Qualifier”. About 32 Teams and hundreds of middle school students ages 9-14 participated in the competition which was presented by LAESA, a chapter of the Society of Hispanic Professional Engineers and one of the largest and most well-known undergraduate student associations at CCNY. Winners went on to compete in the city-wide championship at the Jacob Javits Center. This year's challenge was “Smart Move” where students were asked to identify a transportation problem and develop an innovative solution. Students also had to design a robot that

would complete numerous transportation related tasks in an obstacle course. Students were judged on technical design, research, performance and teamwork. The competition was established to attract students to science and technology. This was the second year the competition was held at CCNY.

NYU's Rudin Center Policy Seminars Draw Hundreds

The Rudin Center for Transportation Policy and Management at NYU continue to host and develop a number of seminars this semester. UTRC continued its co-sponsor ship of these informative and valued programs. “The Thinking and Doing Policy Breakfasts: Policy Makers Meet Policy Researchers” has been well received and the pool of potential candidates for the “New Thinking on Transportation and Society: Doctoral Research Series” has grown increasingly competitive. The following events were held this Spring:

- **“Development in New York City: Linking Physical and Economic Transformation”** was the topic of conversation between NYC Economic Development Corporation President Seth Pinsky and NYU Wagner Professor Mitchell Moss on February 17th. The importance of infrastructure investments to advance the vibrancy and strength of the city's economy and the links between infrastructure and economic systems were discussed.
- **“Building Sustainable Communities: The EPA Agenda”**: On April 14th, Judith A. Enck, Administrator of Region 2 of the U.S. Environmental Protection Agency, and Maria Damon, Assistant Professor of Public Policy and of Environmental Studies at NYU discussed EPA's efforts to promote healthy communities and ecosystems throughout the region, and on implications for transportation systems needed to support the 31 million people that live in Region 2.

The Doctoral Series hosted a number of competitively selected students this Spring. They were:

- April 23, 2010, **Gian-Claudia Sciara**, UC Berkeley presented “Planners and the Pork Barrel: Metropolitan Engagement in and Resistance to Congressional Transportation Earmarking”.
- March 9, **Jen Petersen**, New York University, presented “Whose Streets: Paving the Right to the City”
- March 26th, **Lingqian Hu**, University of Southern California, presented “Urban Spatial Transformation and

Job Accessibility: Spatial Mismatch Hypothesis Revisited.”

- April 25th, **Mike Smart**, UCLA, presented “Immigrant Enclaves and Travel Behavior”.

For more info on both series see <http://wagner.nyu.edu/rudincenter/events/seminars.php>.

UTRC Hosts UCLA Professors at CCNY

Dr. Evelyn Blumenberg, Associate Professor of Urban Planning in the School of Public Affairs at the University of California Los Angeles, visited and delivered “Ethnic Neighborhoods and Travel Behavior” to a packed Sciame Auditorium at the Bernard and Anne Spitzer School of Architecture last February. Prof Blumenberg’s research examines the effects of urban structure—the spatial location of residents, employment, and services—on economic outcomes for low-wage workers, and on the role of planning and policy in shaping the spatial structure cities. Her recent research focuses on the travel behavior of immigrants and the transportation expenditure burden of low-income and minority households.



Later, Dr. Brian Taylor visited the Grove School of Engineering. Here he presented, “Reconsidering Equity in Transportation Finance”. Professor Taylor is Professor and Chair of Urban Planning, and Director of the Institute of Transportation Studies at UCLA. His research examines transportation finance and travel behavior. His current projects examine alternative measures of congestion, user perceptions of public transit, the use of technical information by transportation officials, transportation finance equity, and the history of metropolitan freeway development. Dr. Taylor’s presentation explored political, philosophical, and empirical perspectives on finance equity by focusing on current debates over the fairness of road pricing.

University of Buffalo Selects Donald Shoup as the 2010 Clarkson Chair

Donald Shoup, Professor of Urban Planning at the University of California, Los Angeles, was named the 2010 Clarkson Visiting Chair in Urban and Regional Planning at the University at Buffalo School of Architecture and Planning. Shoup's extensive research into parking as a key link between transportation and land use has had important consequences for cities, the economy and the environment. "Performance Parking" or variable rate parking, based on Shoup's ideas, employs electronic parking meters to make parking spaces in desirable locations and at desirable times more expensive than at less desirable locations. Other variations also include escalating rates based on duration of parking. For more information, go to <http://shoup.bol.ucla.edu/>. While at SUNY Buffalo, Shoup delivered two lectures, “The High Cost of Free Parking” and “Graduated Density Zoning for Infill Redevelopment”.

Upcoming Events

ITS-NY Seventeenth Annual Meeting June 10th and 11th

How “ITS serves the General Public” will be explored through various panels sessions and presentations at this year's exciting 2010 ITS-NY Seventeenth Annual Meeting to be held in Saratoga Springs, NY. Topics include: the National ITS Strategic Research Plan including IntelliDrive; Transportation Authorization and USDOT/FHWA's Future Direction; Incident and Active Traffic Management; Sustainability and Livability; Collecting and Using Data to Serve the General Public; ITS Transit Applications for the General Public; ITS Applications and Technologies for the General Public; and ITS Around the World.

For more information and to view the event brochure, follow <http://utrc2.org/events/events.php?viewid=257>

“High Speed Rail: Leveraging Federal Investment Locally” presented by the Rudin Center

NYU's Rudin Center for Transportation Policy and Management will present “**High Speed Rail: Leveraging Federal Investment Locally**” on June 16th. Following the January 2010 rail funding announcement by the U.S. Department of Transportation, interest in rail investment – and what it means for American communities – has continued to expand. Leveraging Federal Investment Locally will enhance the national dialogue on high-speed rail investment through a focus on how new facilities will be linked to existing regional transportation infrastructure and economic development efforts. Polly Trottenberg, Assistant Secretary for Policy, USDOT, is scheduled to give the keynote address. The event is co-sponsored by *Parsons Brinckerhoff and the Port Authority of New York/New Jersey* and presented in partnership with the *American Public Transportation Association (APTA)*. AICP credits will be offered as well. For details, please see.

<http://wagner.nyu.edu/events/transportation-06-16-2010>

UTRC among Co-sponsors as Newman Real Estate Institute Hosts “Airports: 21st–Century Makeovers for the NY Metro Region”

On June 14th, top officials from the FAA and Port Authority, aviation executives and other aviation experts, and representatives of leading NGOs will examine airports' contributions to our economy. The conference is being hosted by the Steven L. Newman Real Estate Institute and co-sponsored by UTRC, CIUS, the Port Authority of NY and NJ, the CUNY Aviation Institute. Measures are being implemented to manage dramatic growth in air traffic, minimize risk, boost efficiency, and reduce environmental impacts. Financing models and the exciting advances promised by NextGen will be among many topics explored.

Registration is free. For more information, including the agenda and to register, please visit this web page:

<http://www.baruch.cuny.edu/realestate/events/airports.html>

NDE/NDT for Highway Bridges: Structural Materials Technology 2010

Call For Papers

UTRC and NYSDOT among others are co-sponsoring the ASNT “NDE/NDT for Highway Bridges: Structural Materials Technology (SMT) 2010 Conference” and invite abstracts for presentation at the conference and publication in the conference proceedings. This conference will be held in the New York LaGuardia Airport Marriott near New York City, NY on August 16-20, 2010. The goal of this conference is to assemble owners, researchers, industry, academicians, and practitioners concerned with condition assessment and Nondestructive evaluation (NDE) of highways and bridges. In an informal conference setting, participants and presenters discuss innovative new NDE/monitoring technologies, best practices for applying existing technologies, and significant challenges faced by owners trying to assess existing bridges and infrastructure. The conference is designed to promote the exchange of information between researchers, practitioners and highway infrastructure owners with emphasis on case studies.

More information on the conference, abstract submission instructions, and exhibitor information can be found [here](#). If you need further information, contact Dr. Sreenivas Alampalli (salampalli@dot.state.ny.us).

Region 2 University Transportation Research Center
(Serving New Jersey, New York, Puerto Rico, and U.S. Virgin Islands)

Camille Kamga, Ph.D., Acting Director

Nadia Aslam, Administrative Assistant
Penny Eickemeyer, Assistant Director for Program Management
Herbert Levinson, Icon Mentor
Benjamin Miller, Senior Research Associate, Freight Programs
Danielle L. Petretta, AICP, Assistant Director for Technology Transfer
Ellen Thorson, Ph.D., Senior Research Fellow

UTRC Research News is published quarterly by the University Transportation Research Center, which is based at the City College of New York, 910 Marshak Hall, New York, NY 10031. Editorial inquiries and submissions can be made by contacting Danielle Petretta at 212-650-8052 or email at dpetretta@utrc2.org.
For more information on our programs or to notify us for an address correction,
Please email nadia@utrc2.org.

CONSORTIUM MEMBERS include the City University of New York, Columbia University, Cornell University, New Jersey Institute of Technology, New York University, Polytechnic Institute of NYU, Rensselaer Polytechnic Institute, Rowan University, Rutgers University, the State University of New York system, Stevens Institute of Technology, and the University of Puerto Rico.

To remove your name from our mailing list, please send and email to seminars@utrc2.org
Questions or Comments? Email us at utrc@utrc2.org