

Last Mile Freight Delivery: Cities and Logistics



Presented October 4, 2013 to University Transportation Research Center Region II
Presented by Stacey D. Hodge, NYCDOT Office of Freight Mobility

Outline

- Overview of the NYCDOT
- NYC Truck Routes
- Bridge Hit Mitigation
- Sustainable Deliveries
- Land Use and Freight
- Outreach



New York City Department of Transportation

- Approx. 5,800 miles of streets, sidewalks, and highways, over 1.3 million signs and 12,460 intersections with traffic signals
- 789 bridge structures, including 6 tunnels
- Own and operate the Staten Island Ferry, over 20 million people served annually
- Over 4,000 staff



NYCDOT Office of Freight Mobility



- Improve public safety
- Provide a high quality of life for residents



- Balance goods movement with other uses of curb, street, and highway space
- Support the City's economy

Project Partners



Rensselaer

NYU Wagner

Robert F. Wagner Graduate School of Public Service



RUTGERS
UNIVERSITY

nyserda
Energy. Innovation. Solutions.



New York State
Department of Transportation



Project Partners

- NYPD
- NYS Highway Patrol
- NYS DOT
- CT State Police
- MTA B&T
- Westchester County
- NJ Turnpike Authority
- Port Authority NY&NJ
- American Transport. Research Institute
- UTRC Region II
- NYS Motor Trucking Assoc.
- American Truckers Assoc.
- NYS Thruway Authority

Industry Partnerships

DUANERead[™]

Part of the *Walgreens* family of companies.



INTERCONTINENTAL.
HOTELS & RESORTS



GEORGETOWN CUPCAKE



NEW YORK
STATE
RESTAURANT
ASSOCIATION



Industry Partnerships

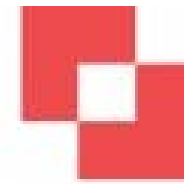
- Associations



WE MEAN BUSINESS



- Business Improvement Districts



Grand Central
PARTNERSHIP



34th Street
Partnership



NYC Truck Route Network



Local and Through Truck Routes

Bronx:	172 miles
Brooklyn:	198 miles
Queens:	243 miles
Manhattan:	130 miles
Staten Island:	194 miles
Total	937 miles

Local and Through Truck Routes

– Local Truck Routes

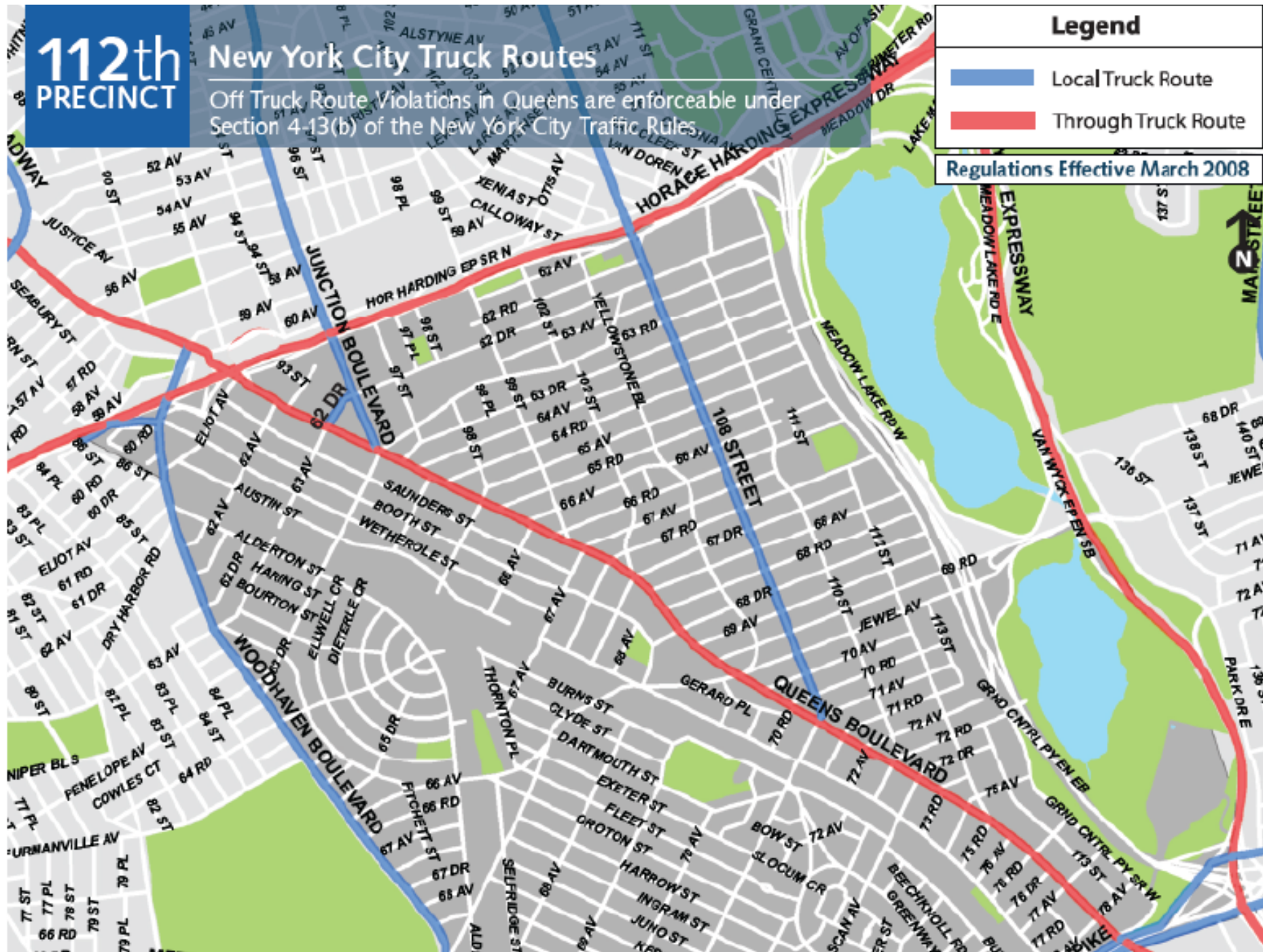
- For use by trucks with an origin or destination within the respective Borough
- Trucks may operate on non-designated streets for the purpose of arriving at their destination

– Through Truck Routes

- For use by trucks with neither an origin nor a destination within the respective Borough



Truck Route Enforcement



Parkway Bridge Hits

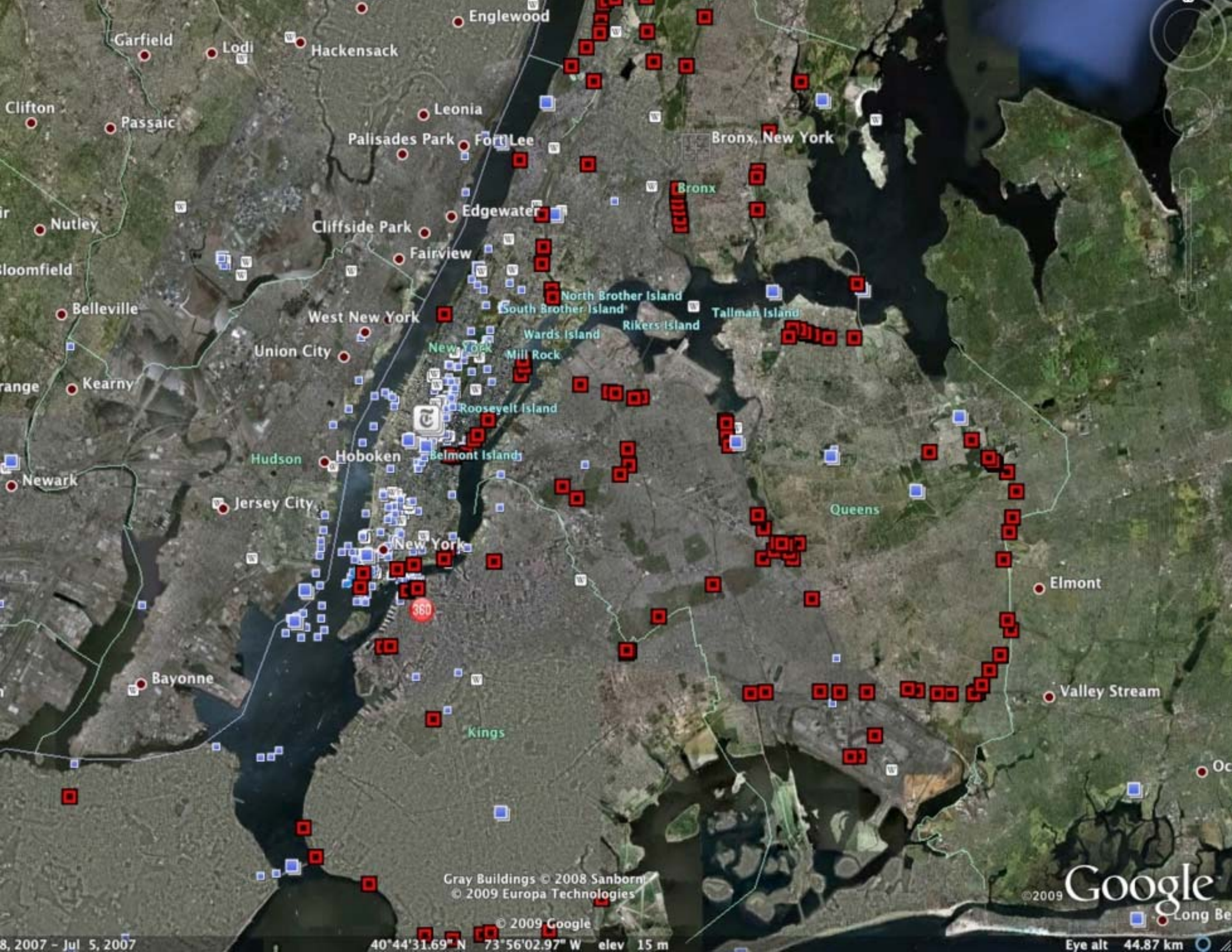


Bridge Hits



Bridge Hits





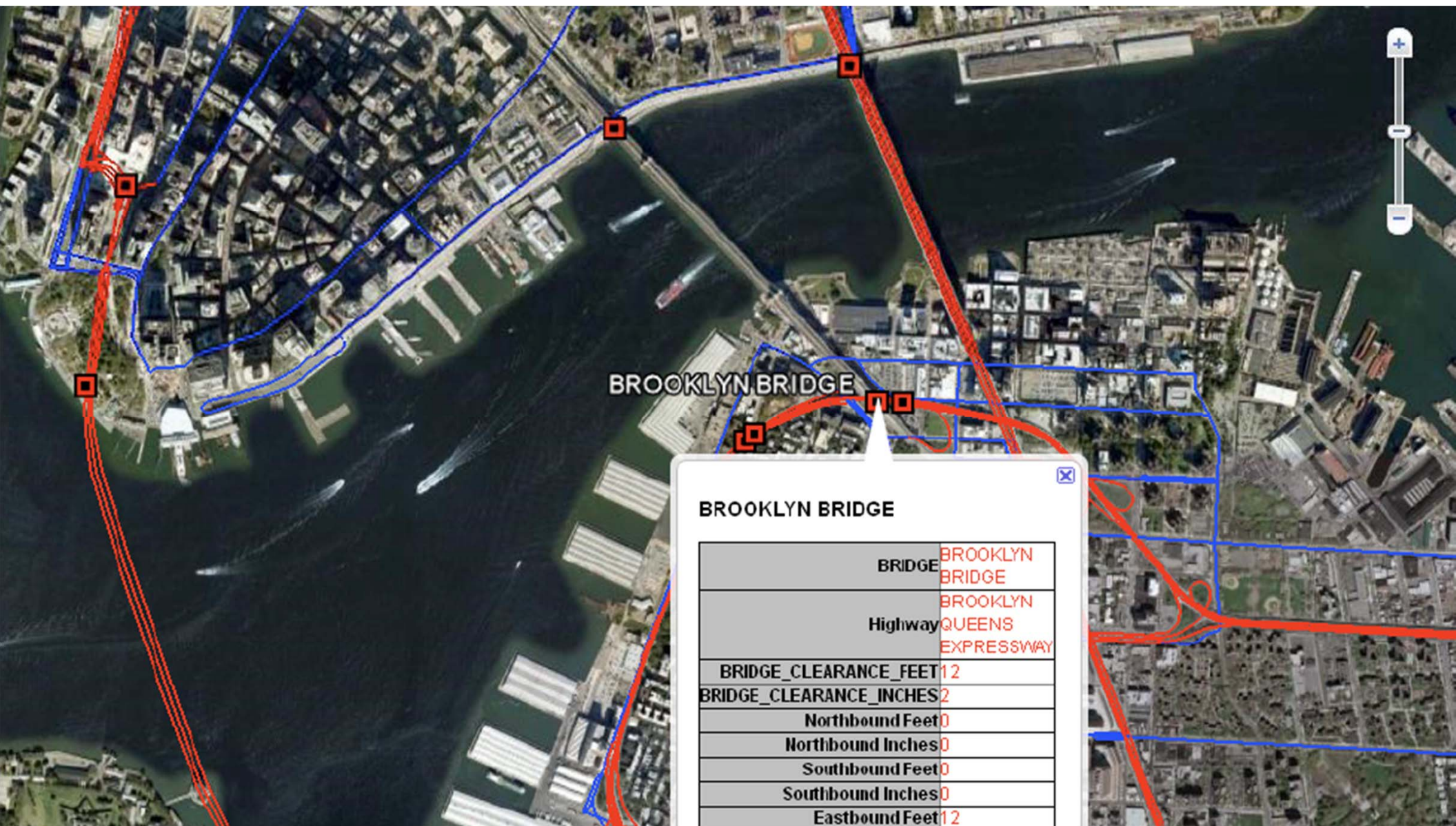
8, 2007 - Jul 5, 2007

40°44'31.69" N 73°56'02.97" W elev 15 m

Google
© 2009

Eye alt 44.87 km

Low Bridge GIS/KML File



Truck Detection System

NY 370 Onondaga Lake Parkway, Syracuse, NY

- NYSDOT infra red truck detection system
- Installed Oct 2011
- 230 system activations Jan to Dec 2012
- No bridge hits until Jan 28th 2013
- Linked with TMC



Truck Detection Pilots



New York City DOT
NYCDOT - NYD-DOT-Mobile TrailerCam Lite Demo
Bronx, NY US

EarthCam

Control Archives Satellite Wireless Solar Traffic

Calendar

November 2009

Sun	Mon	Tue	Wed	Thu	Fri	Sat
1	2	3	4	5	6	7
8	9	10	11	12	13	14
15	16	17	18	19	20	21
22	23	24	25	26	27	28
29	30					

44 Events 16 - 10:14:21

Archives

Event 10:14:21

A live video feed from a camera mounted on a mobile trailer. The feed shows a multi-lane highway with several vehicles, including a large white truck in the foreground. The road is bordered by green grass and trees.

Sustainable Deliveries

West End Avenue @ West 80th Street



Observation: Double parked trucks reduce visibility and create safety concerns.

East 83rd Street at 2nd Avenue



Observations:
Loading zones
relocated due to
2nd Ave Subway
construction

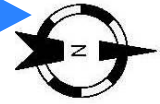
**UPS Trucks on
Sidewalk**

East 83rd Street at 1st Avenue



**Proposal: Provide
short term truck
loading between
1st and 2nd
Avenues near the
corner**

West End Ave. at West 80th Street



Residential

Street cleaning 11-12:30p M & TH

hyd

W 79 St

West End Av

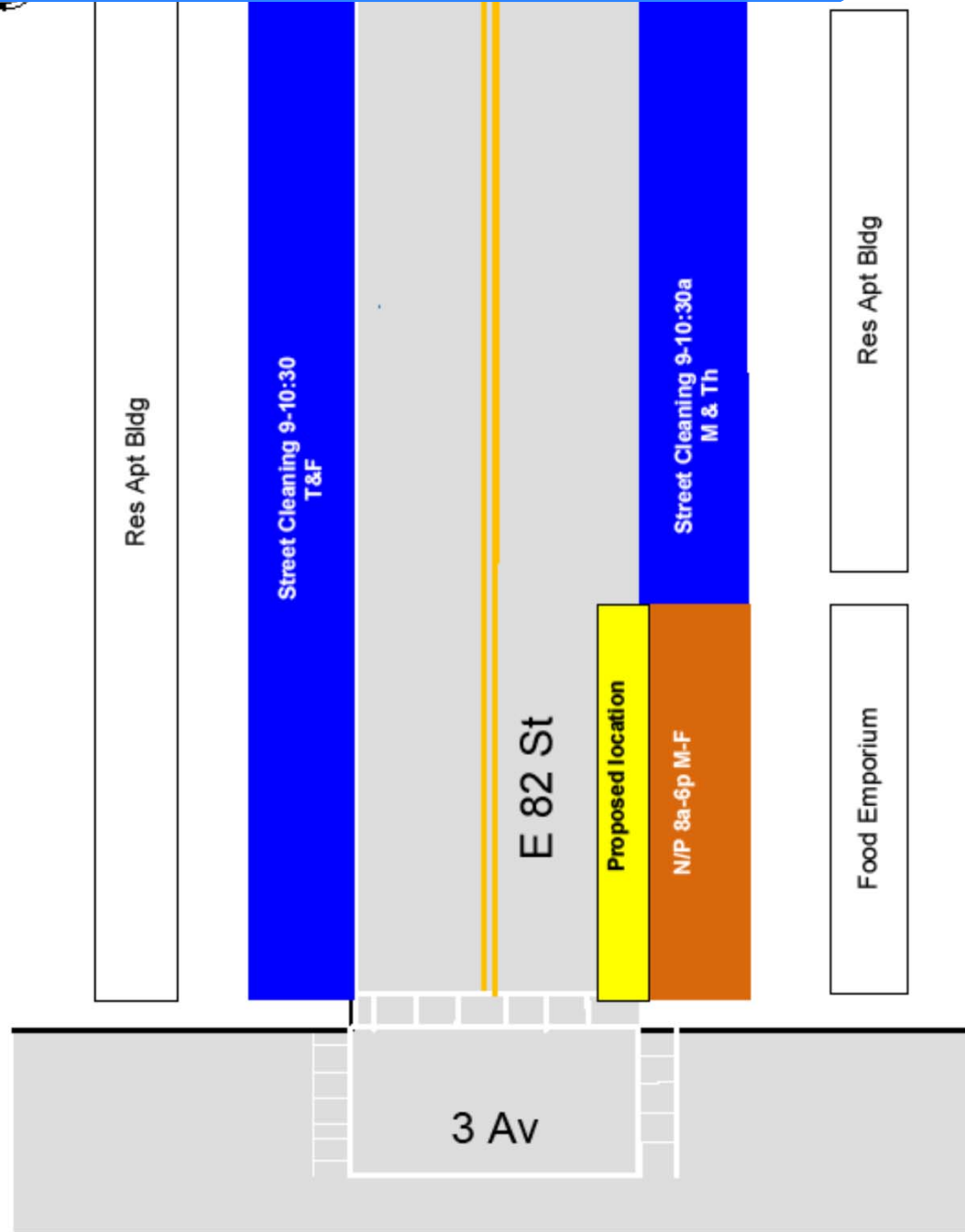
Proposed location

W 80 St

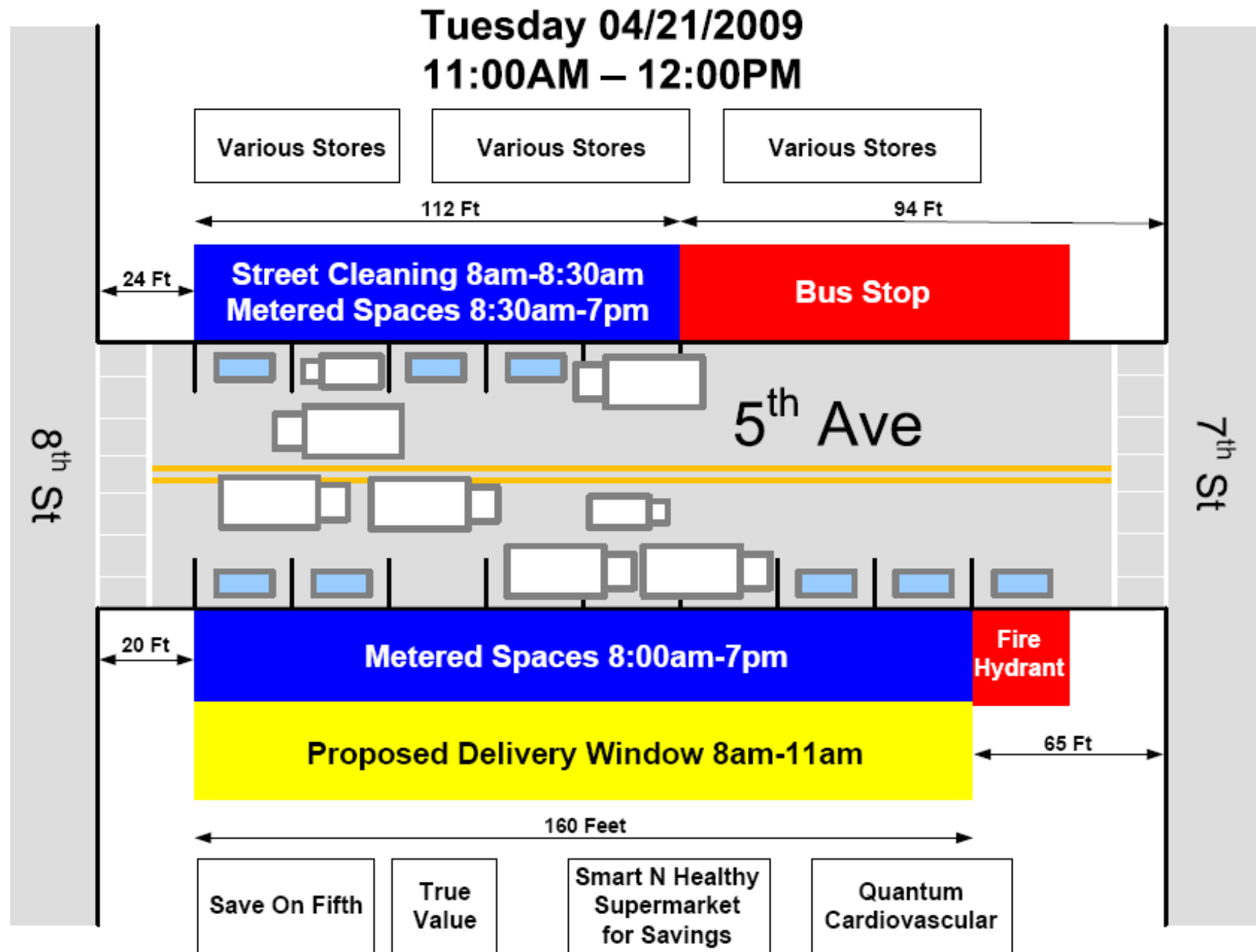
Street Cleaning 11-12:30p T & F

Residential

East 82nd Street at 3rd Avenue



Delivery Windows



Truck Hot Spots

- Upper West and Upper East Sides
- 50 to 60 foot long loading area
- 1 Hour Limit
- 9AM to 7PM: reflects needs of home deliveries

NO STANDING

**EXCEPT TRUCKS
LOADING & UNLOADING**

**9AM - 7PM
MONDAY - FRIDAY**

1 HOUR LIMIT

NYC DEPT OF TRANSPORTATION

West End Avenue Observations



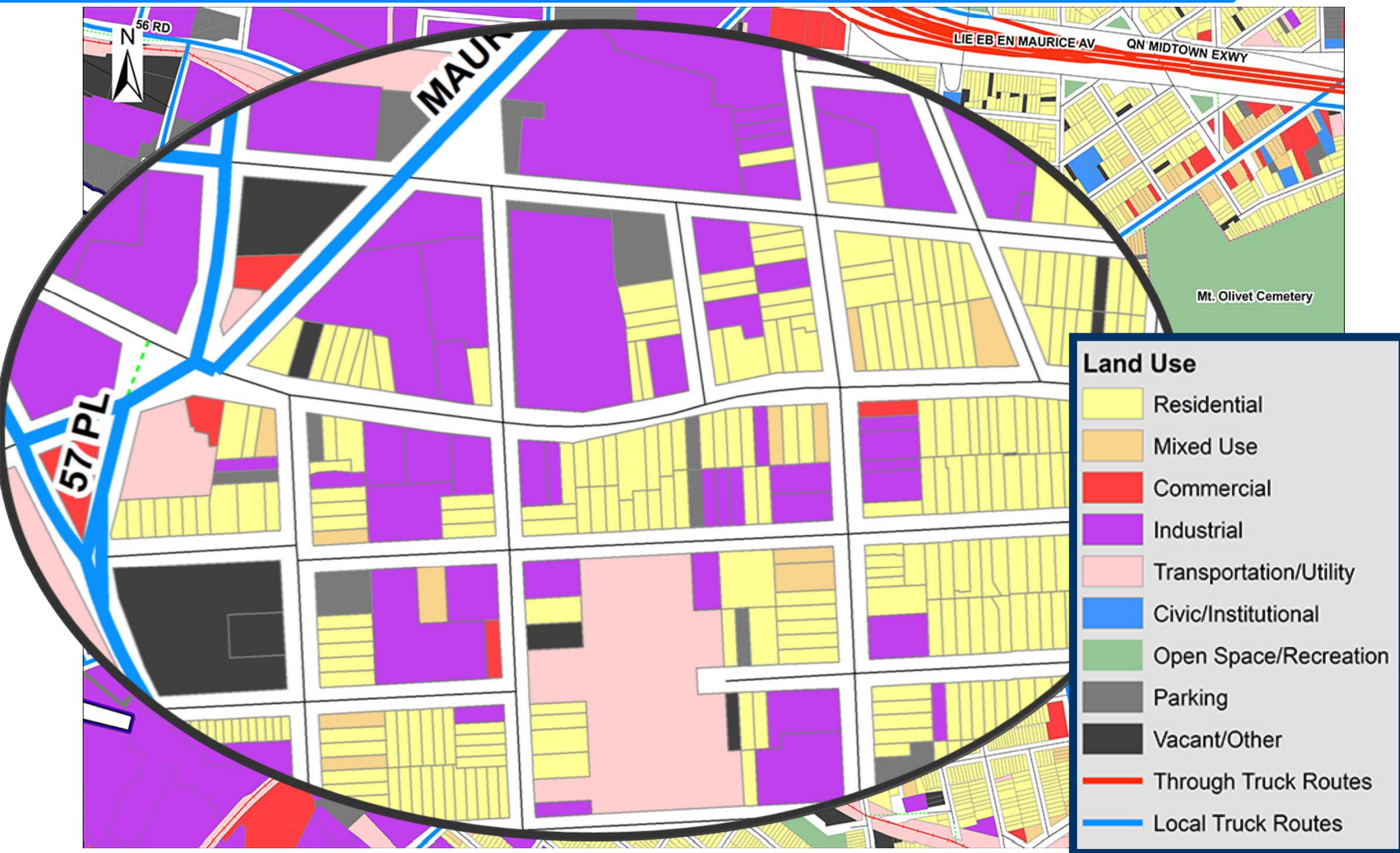
West End Ave. @ W. 79th St.

5/10/2012

- Here a NYPD tow truck is seen towing a taxi @ 10:22 AM.
 - The taxi had been there for at least 23 minutes.
- Though the service vans are allowed to park in the zone, they remained there for far longer than permitted after the tow truck left.



Problem: Land Use Conflicts



Large Trucks on Residential Streets



Large Trucks on Local Streets



Large Trucks on Local Streets



Off hour Delivery Accomplishments



- NYC adopted off-hour deliveries as part of its sustainability strategy.
- Other City agencies are working with us to determine how to expand OHD using incentives.
- The FHWA and EPA issued \$450,000 grants to implement OHD delivery programs
- NYSERDA Grant Funding Award
- Numerous cities have inquired about OHD programs.

Outreach Efforts



- Industry Listening Sessions
- Truck Ride Alongs
- Focus Groups with Business Operators
- NYS Motor Truck Association Coordination



Outreach Efforts: Summer Streets



August 3, 2013: Kids in Truck – Con-way Freight

Outreach Efforts: Summer Streets



Outreach Efforts: Summer Streets





Thank
You