



# Guidance on Integrating Environmental Issues in the Transportation Planning Process



Author: Di Liu

Advisor: Jan Khan

# Introduction



- Review on Best Practices
- Environmental Inventories
- Possible Project Impacts
- Overall Guidance
- Mitigation Strategies

# Review on Best Practices



## Regulations



## Information on Environmental Resources



# Review on Best Practices



- Integrated documents in RTP

*RTP/SCS by SCAG;*

*Report on Environmental  
Consultation by OKI;*

*Connections 2040 Plan for Greater  
Philadelphia by DVRPC.*



2016  
2040 **RTPSCS**

THE **2016-2040** REGIONAL TRANSPORTATION PLAN/  
SUSTAINABLE COMMUNITIES STRATEGY  
A Plan for Mobility, Accessibility, Sustainability and a High Quality of Life

DRAFT  
DECEMBER 2015

# Review on Best Practices

- Independent Process Guidelines



*Integrating Environmental Issues in the  
Transportation Planning Process* by SEMCOG

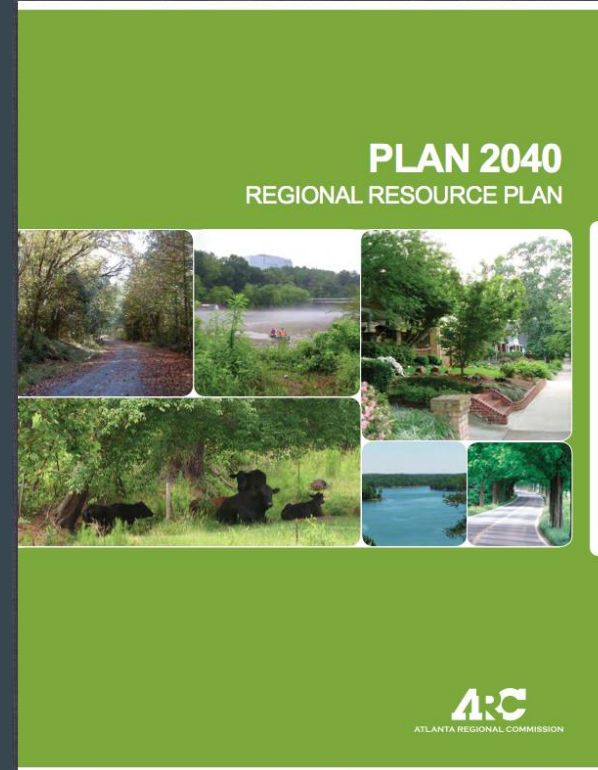
## **Integrating Environmental Issues in the Transportation Planning Process: Guidelines for Road and Transit Agencies**

January 2007

# Review on Best Practices

- Environmental Resource Plan

*Regional Resource Plan by ARC*

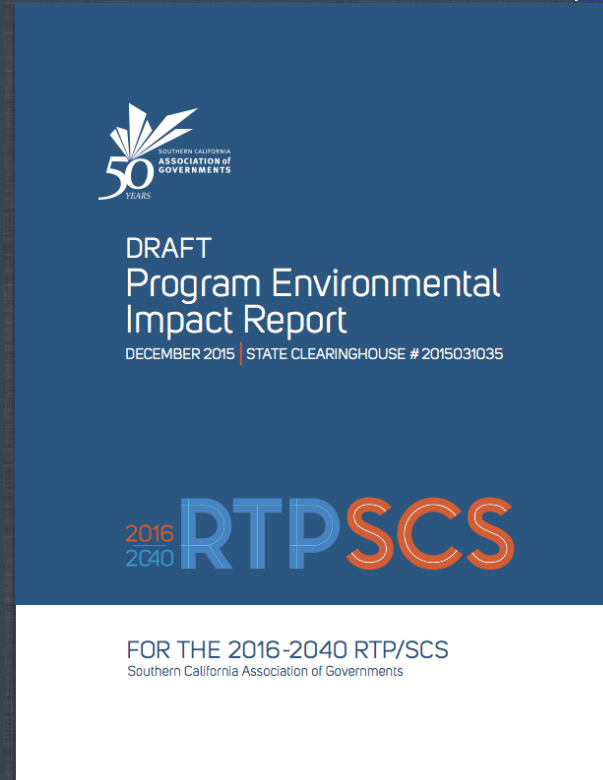


# Review on Best Practices



- Project Environmental Impact Report

*Project Environmental Impact Report*  
by SCAG



# Review on Best Practices

- Tools

*Planning Insight Network* by DRCOG;

*Eco-Logical* by H-GAC

- Partnering Agreements



# Overall Guidance

- Define and inventory environmentally sensitive resources
- Assess environmental impacts
- Identify and analyze alternatives
- Consider appropriate impact mitigation
- Promote interagency participation
- Promote public involvement
- Strengthen Internal Coordination

# Data Sources of Environmental Inventories

Recreation and Preservation of Culture	
National Park Service	National Park Boundaries
NYS Office of Parks, Recreation & Historic Preservation	Cultural and Historic sites
	State Parks
	Parks

Hydrography and Protected Waters	
NYS Department of Environment Conservation	Wildlife/Bird Protection/Refuge Area
	Freshwater Wetlands
	Tidal Wetlands
	Water Quality Classification
NYS Office of Cyber Security	Significant Coastal Fish and Wildlife Habitats
	Area Hydrography
	Linear Hydrography

Flood Zones	
Federal Emergency Management Agency	Advisory Base Flood Elevation Rockland
	National Flood Hazard Layer NYMTC
	PFIRM NYC
	Westchester PFIRM

# Possible Project Impacts



Project Type	Number of Projects Possibly Impacting Resource							
	Cultural or Historic sites	Parks and Recreational Areas	Non-Recreational Facilities	Primary Aquifers	Waterbodies	Freshwater Wetlands	Coastal Habitats	Flood Zones
bus	15	16	4	2	17	7	6	19
Ped	23	11	1	8	18	12	4	19
highway	138	129	33	2	224	114	46	149
transit	99	43	5	4	50	1	19	67
bike	10	7	--	--	6	2	2	6
ferry	6	1	--	--	8	2	2	8
ITS	3	3	--	--	3	5	--	2
Parking	1	2	1	--	--	2	--	--
study	1	1	--	--	2	--	--	2
rail	1	--	1	--	1	--	--	1
total	297	213	45	16	329	145	79	273

# Freshwater Wetlands

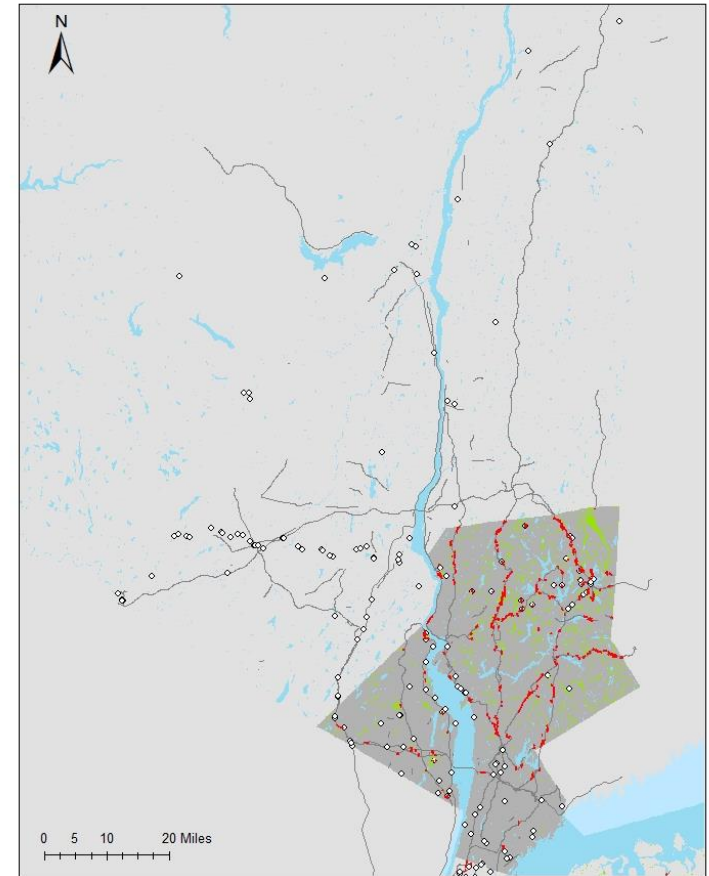
- **Value:**

Water Quality and Quantity Preservation;  
Flood and Storm Water Control;  
Surface and Groundwater Protection;  
Erosion Control;  
Pollution Treatment and Nutrient Cycling;  
Fish and Wildlife Habitat.

- **Vulnerability:**

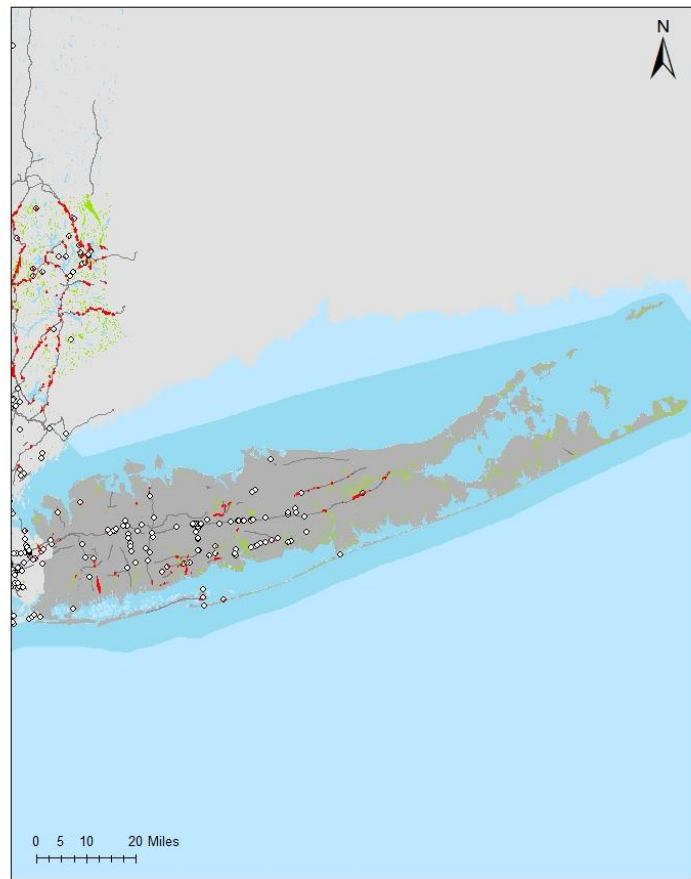
Unregulated activities, Erosion, Stormwater runoff, Pollution, etc.

*Potentially Impacted Freshwater Wetlands in the Lower Hudson Valley*



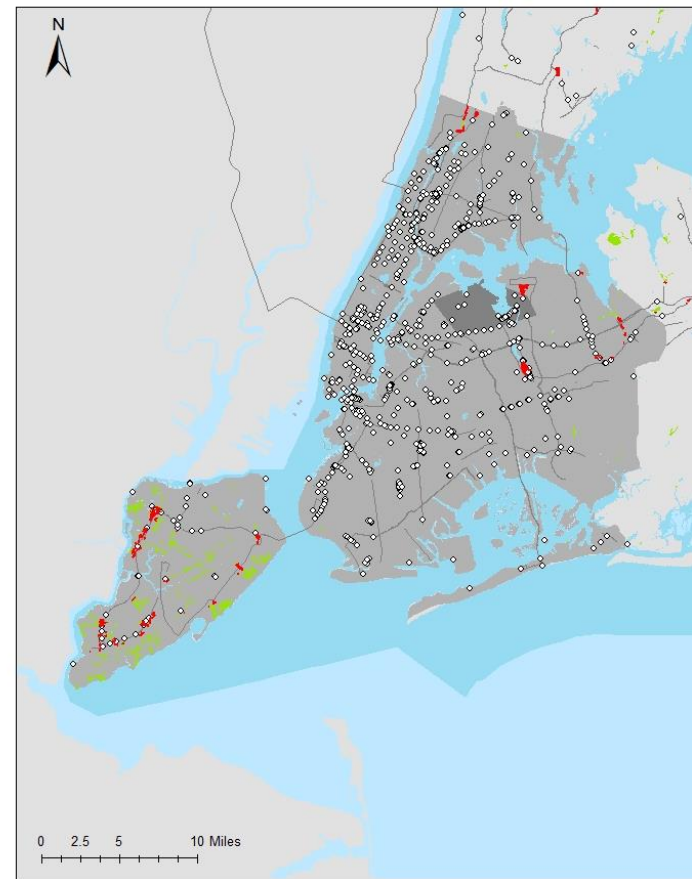
- ◊ 2017-2021 TIP Project Type I
- 2017-2021 TIP Projects Type II
- Freshwater Wetlands
- Potentially Impacted Freshwater Wetlands

**Potentially Impacted Freshwater Wetlands in the Long Island**



- ◊ 2017-2021 TIP Project Type I
- 2017-2021 TIP Projects Type II
- ◻ Freshwater Wetlands
- ◻ Potentially Impacted Freshwater Wetlands

**Potentially Impacted Freshwater Wetlands in the New York City**



- ◊ 2017-2021 TIP Project Type I
- 2017-2021 TIP Projects Type II
- ◻ 2017-2021 TIP Project Type III
- ◻ Freshwater Wetlands
- ◻ Potentially Impacted Freshwater Wetlands

# Freshwater Wetlands Mitigation Strategies

Follow procedures



Address management issues



Confine development



Explicit usage of equipment



# Parks and Recreational Areas

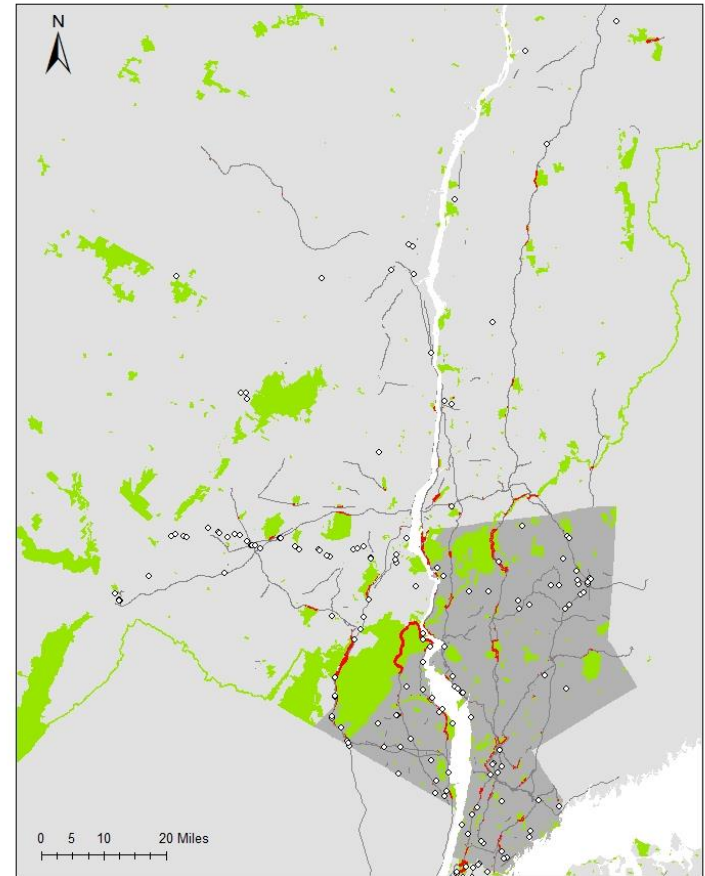
- **Value:**

Recreation and leisure; green spaces; Wildlife habitats protection; Preserve areas of historical and cultural values.

- **Vulnerability:**

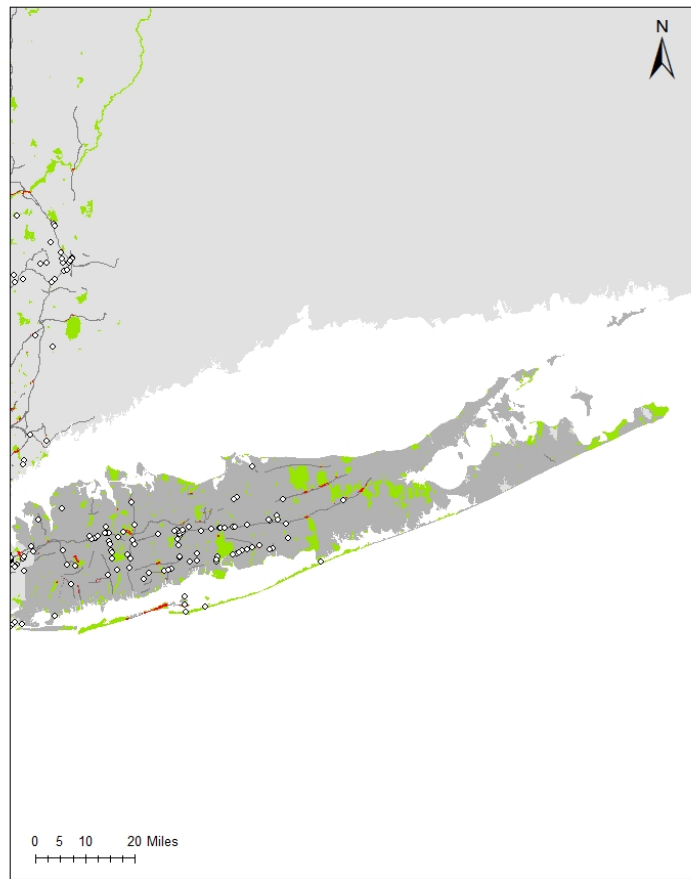
Land is acquired or occupied for other purposes;  
Site features or subsurface resources are damaged;  
Adjacent development is incompatible with the parks and significant viewshed;  
Erosion, stormwater run-off flows, and over-use of resource

*Potentially Impacted Parks and Recreational Areas in the Lower Hudson Valley*



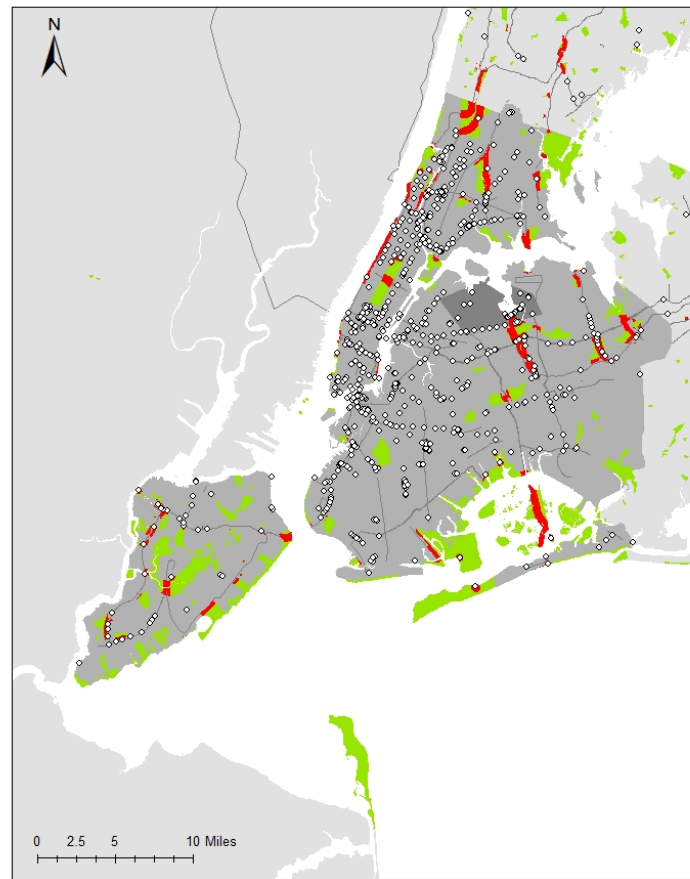
- ◊ 2017-2021 TIP Project Type I
- 2017-2021 TIP Projects Type II
- Parks and Recreational Areas
- Potentially Impacted Parks and Recreational Areas

**Potentially Impacted Parks and Recreational Areas in the Long Island**



- ◊ 2017-2021 TIP Project Type I
- 2017-2021 TIP Projects Type II
- Parks and Recreational Areas
- Potentially Impacted Parks and Recreational Areas

**Potentially Impacted Parks and Recreational Areas in the New York City**



- ◊ 2017-2021 TIP Project Type I
- 2017-2021 TIP Projects Type II
- 2017-2021 TIP Project Type III
- Parks and Recreational Areas
- Potentially Impacted Parks and Recreational Areas



# Parks and Recreational Areas Mitigation Strategies

Follow procedures



Compensate for the loss



Confine development



Explicit usage of equipment



**Thanks for Listening.**